

“Where will our knowledge take you?”

# Reconnaissance Magnetometer Survey of King George Sound

Albany Port Authority / Grange Resources



**“ BMT JFA was engaged to facilitate the completion of a reconnaissance magnetometer survey which identified substantial magnetic contamination in the proposed dredge area. ”**



Grange Resources Limited (Grange) is a Western Australian based mining and exploration company. Grange are proposing to mine the Southdown Magnetite deposit and pump the magnetite concentrate slurry approximately 100 km to a concentrate storage facility at the Port of Albany. The concentrate will be loaded on to Cape size vessels and shipped to an iron ore pellet plant located in Malaysia.

BMT JFA was engaged to facilitate the completion of a reconnaissance magnetometer survey in 2007. Based on sample survey transects, survey results indicated that there may be substantial magnetic contamination in the proposed dredge area. The study identified a requirement for full investigation of the proposed dredge area.

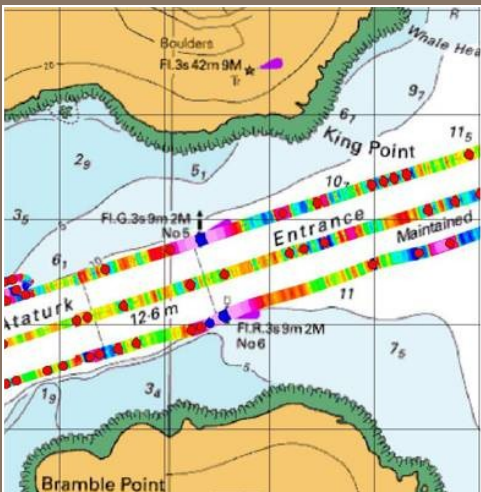
Subsequently, a detailed magnetic gradiometer survey has been completed to provide better information pertaining to the source of the magnetic anomalies.

## BMT JFA Role

- Project management for magnetometer surveys of the proposed channel to locate UXO that may be present on or beneath the seafloor
- Completion of an early stage reconnaissance survey to measure magnetic contamination levels
- Planning for a detailed high definition magnetic gradiometer survey to identify specific targets for removal
- Contract management services including tender documentation and assessment
- Supervision of site work.

## Services & Expertise Provided

- Project management
- Detailed design
- Procurement
- Site investigation
- Contract management
- Site management.



## Location

Albany, Western Australia

## Date

2005 - 2007