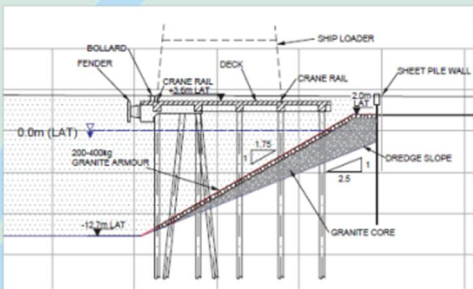


“Where will our knowledge take you?”

## Coastal and Maritime Structures

### Jetties and Wharfs



Jetty and wharf structures are key components of many coastal, port and harbour developments. The inherently complex and aggressive nature of the marine environment requires a thorough understanding of the external conditions to ensure that the structures will be designed to provide the required level of protection and remain functional throughout the design life.

The nature and design of the structure will vary depending on the site and its purpose. Either internally or through specialist design and drafting resources, BMT JFA provides a full range of services, ranging from planning, conceptual and preliminary design phases to support feasibility studies, through to detailed

**“ BMT JFA has extensive experience in the design and construction of jetty and wharf structures and applies the latest advances in technology and research to provide innovative and cost effective designs. ”**

design and construction phases.

BMT JFA have particular expertise in the concept planning and development of marine facilities and in the technical and economic assessment of various potential options for the development of such facilities, of which the jetties and wharves are key components. BMT JFA are able to consider a wide range of jetty and wharf structures in order to determine the arrangement that best meets the project requirements.

#### Key Capabilities:

- Development of conceptual, preliminary and detailed designs
- Tender preparation, management and evaluation
- Construction management and site supervision
- Conditions assessments and asset management.

#### Related Projects:

- Oakajee Panamax Options Study
- Albany Port Expansion Project
- Cashmere Esperance Feasibility Study
- Carnarvon Tug Pens
- Balla Balla Port Options Study

- Toliara Port Options Study.

#### Services Offered:

- Development of conceptual designs, layouts and cost estimates
- Defining design criteria and design wave and water level conditions
- Determination of wave forces on jetty and wharf structures
- Determination of wave loading on piles and decks
- Development of preliminary and detailed designs
- Management of site survey and geotechnical investigations
- Management and supervision of physical modelling studies (if required for exposed structures)
- Development of construction methodology and construction methodology assessments
- Calculation of construction material quantities and construction cost estimates
- Preparation of request for quotation documentation, submission and evaluation
- Preparation of construction specifications and scope of work documents
- Tender preparation, management and evaluation
- Construction management and site supervision
- Condition assessments and asset management
- Rehabilitation, repair or upgrading of existing marine structures.